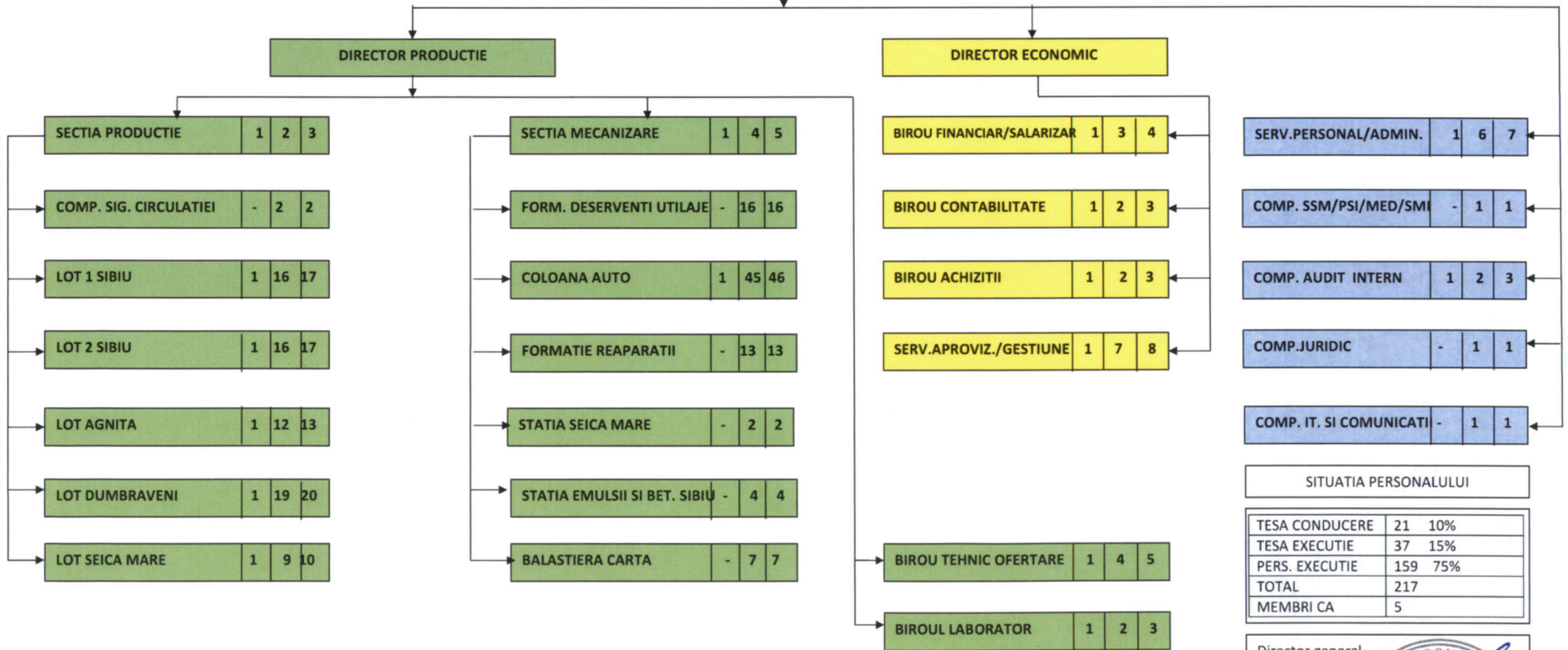
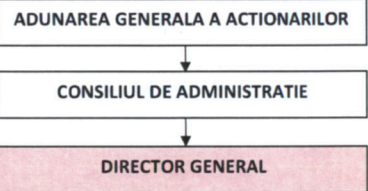




APROBAT PRIN HOT. CA nr. 34/23.11.2017
PRESEDINTE C.A.,
RADU GANEA



SITUATIA PERSONALULUI

TESA CONDUCERE	21	10%
TESA EXECUTIE	37	15%
PERS. EXECUTIE	159	75%
TOTAL	217	
MEMBRI CA	5	

Director general
Ovidiu SPATARU

